

*"My House Shall Be A House
of Prayer For All People."*

Congregation Kol Ami E Koleinu

January 29, 2014

29 Shevat 5774

In This Issue

[Condolences](#)

[Refuah Schlemah](#)

[Religious School](#)

[Calendar](#)

[SOVA](#)

[Watch Services Online](#)

[Rabbi Eger Online](#)

[Tzedakah Cans](#)

[Worship Services](#)

[Rock 'n Soul Brunch](#)

[Satellite Shabbat](#)

[RIE](#)

Quick Links

[Kol Ami Home Page](#)

[Join Our Mailing List!](#)

[DONATE NOW](#)

WORSHIP SERVICES

Please join us for Shabbat Services
Friday, January 31, 2014 at 8:00 PM

Services will be led by Rabbi Denise Eger
and Student Rabbi Jeremy Gimbel

Saturday morning Shabbat worship 10:00 AM

All are invited to celebrate the Bar Mitzvah of
Sidney Weisberg-Sweetman, son of Jane
Weisberg and Laura Sweetman

Condolences

*Our heartfelt condolences to Keith
Rand and Hon. John D'Amico on the
death of Keith's mother, Lillian Rand.*

Refuah Schlemah

Please keep the following people in your
prayers:

Jane Drucker, Rick Leed, Iris Levine,
Steve Hochstein, Steve
Reissman, Lowell Selvin,

Watch the BIG GAME

February 2, 2014 at 3PM
\$20 refreshments

Milton Singer, Bob Weiner,
Jane Weisberg

Religious School
Sunday, February 2, 2014 at
9:00 AM

Temple Emanuel Beverly Hills

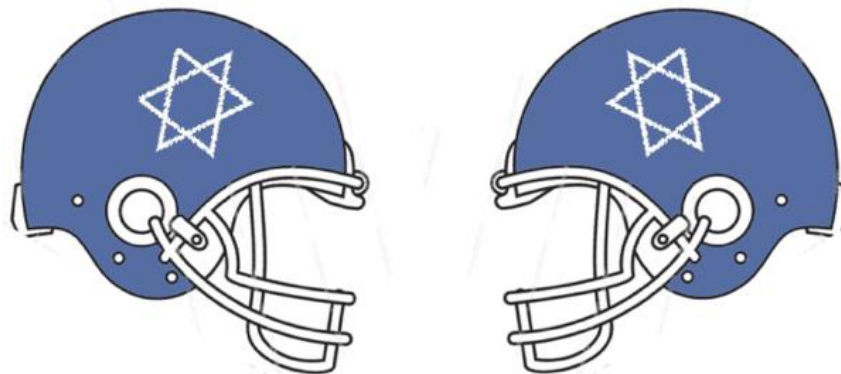


SIDNEY WEISBERG SWEETMAN,
JANE WEISBERG AND
LAURA SWEETMAN ON SIDNEY'S
BAR MITZVAH

BAGELS, BRUCHOS, and BUBBEMEISES

Join Congregation Kol Ami for an innovative, warm, and intimate approach to Shabbat morning learning, discussion, stories, and music. We will eat a little (bagels), bless a little (bruchos/brachot), tell a few stories (bubbemeises), and learn together. Our own Peter Mackler will share his expertise and experiences in Jewish learning from the Shalom Hartman Institute.

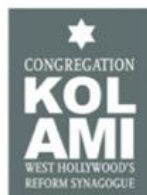
Our Shabbat morning program
will take place
February 22 at 10 AM



Kol Atid & Kol Ami present

THE BIG GAME!

Watch The Big Game on our GIANT screen!
Enjoy delicious food, beer, & cocktails!
Hang out with great people!



FEB. 2, 3:00 PM, 1200 N LABREA
FREE ADMITTANCE, \$20 REFRESHMENTS
RSVP TO STUDENTRABBI@KOL-AMI.ORG

America's biggest sporting event of the year is upon us and we're having a massive party and SERIOUSLY big screen viewing of the game. Join us for some fabulous food with our "build your own brat" bar as well as gourmet salmon/veggie sliders, handmade kettle chips, popcorn and cupcakes!

\$20 buys your meal ticket and 1 complementary drink from our bar.

PLEASE PLEASE PLEASE RSVP so we can plan for enough food.

Even if you just like the commercials, come party with an awesome group of people on Sunday.

CALLING ALL PURIM SHPIELERS
PURIM IS MARCH 15, 2014

THIS YEAR'S PURIM SHPIEL IS:

**GYPSY:
THE MUSICAL FABLE OF ESTHER ROSE
LEEBOWITZ**

at the home of Dr. Nancy Cohen.
Prior knowledge of Hebrew is not
required, and all are welcome.

Please RSVP to the Temple office
as space is limited. The address
and phone number will be
provided by the office.

Calendar

Friday, January 31, 2014

8:00 PM Shabbat Services with
Rabbi Eger and Student Rabbi Gimbel

Saturday, February 1, 2014

10:00 AM Shabbat Morning
Services - Bar Mitzvah of Sidney
Weisberg-Sweetman

Sunday, February 2, 2014

9:00 AM Religious School at
Temple Emanuel Beverly Hills
3:00 PM Kol Atid Big Game
Watching Party

Tuesday, February 4, 2014

7:00 PM Intro to Judaism

Friday, February 7, 2014

6:45 PM Shabbat Services with
Rabbi Eger and Student Rabbi Gimbel

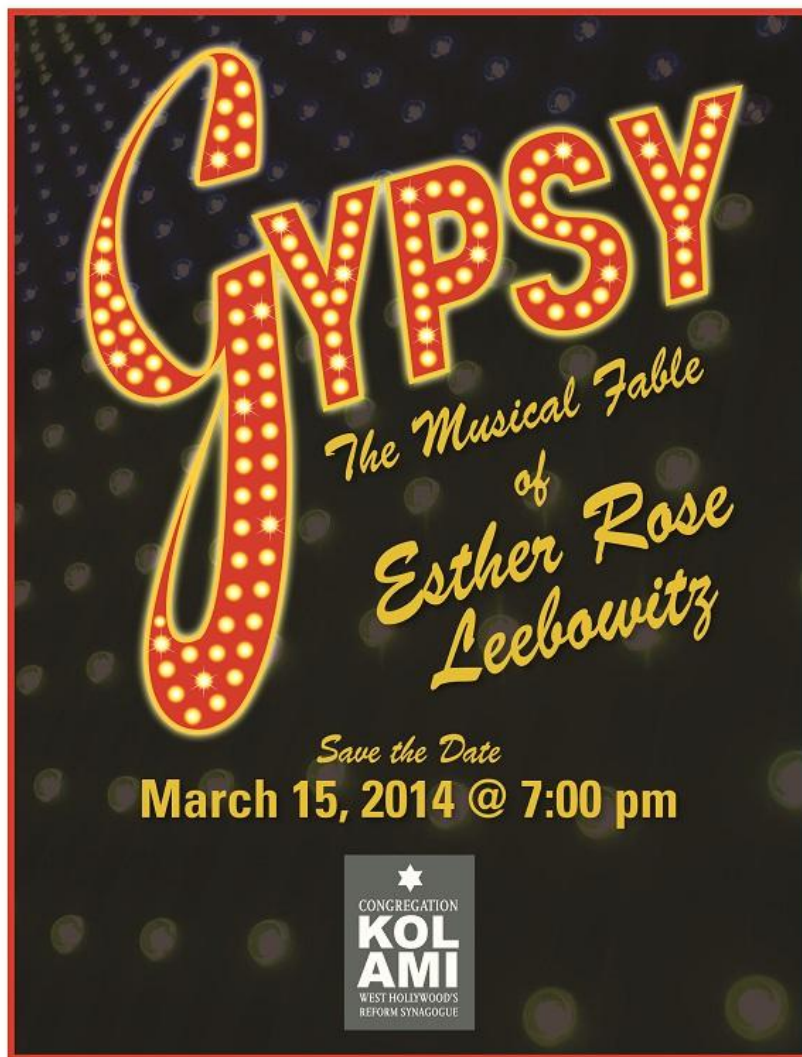
Saturday, February 8, 2014

10:00 AM Torah Study
12:15 PM HIV+ Shabbat Lunch

**PLEASE remember to bring
food and personal items every
time you come to the temple.**

**HELP US REFILL OUR
BARRELS**

**THIS IS YOUR CHANCE TO SHOW OFF YOUR ACTING
AND SINGING SKILLS**



Please contact Cantor Saltzman for more information at:
cantor@kol-ami.org

Rehearsal schedule:

Thursday, March 6 7:00 PM - 10:00 PM

Thursday, March 13, 7:00 PM - 10:00 PM

Saturday, March 15 2:00 PM - 5:00 PM

**Kol Ami's Rock 'N Soul Brunch was a huge
success!! Everyone enjoyed themselves and the
music was fantastic. Thanks to everyone who
contributed and thank you to Cantor Mark**



SOVA needs razors, soap, lotion, deodorant, toothpaste, toothbrushes, and shampoo. Also, boxed macaroni & cheese, canned pasta, and peanut butter.

Please pick some of the items listed above on your next shopping trip to donate to SOVA.

Kol Ami will be meeting at SOVA the 2nd Sunday of each month.

Please join us.

NEXT DATE:
 Sunday
 February 9, 2014
 8:30 AM - NOON

LOCATION:
 1140 N. La Brea
 West Hollywood, 90038
 (1 block south of the synagogue)

Join the Social Action Committee at SOVA, the Jewish Family Services food pantry to help pack groceries for clients. We are there every 2nd Sunday from 8:30 to noon, followed by lunch. Please notify Ed Casson at: ecasson@gmail.com if you are interested in joining us or for other volunteer opportunities at SOVA.

When you visit the synagogue, please

Saltzman and Student Rabbi Jeremy Gimbel and his band for the beautiful music.



remember to bring donations for the SOVA barrels.

Thank you and remember, SOVA is here to serve you if you are in need. They have two other locations in Van Nuys and in the Pico-Robertson district.

For more information, please visit their website at:

jfsla.org/sova

You can now read Rabbi Eger's sermons online at www.rabbieger.wordpress.com


If you are unable to make it to Services and would still like to join us for worship, NOW YOU CAN!


Kol Ami is proud to offer you the opportunity to view Friday evening Services live on the web.

Please [connect here](#) for Friday night Services, and enjoy the spiritual experience of Kol Ami at home.

Rabbi Eger Online!

Did you know Rabbi Eger not only keeps up her Torah blog on the Kol Ami website, but also has her own personal blog?

 There are new posts every day, so be sure to visit often. Click this link to start reading [Click Here](#)

 You can also follow Rabbi Eger on Twitter! [@deniseeger](#) or follow Kol Ami [@KolAmiLA](#)

 And friend her on Facebook! [Click Here](#)

Join American Jewish World Service (AJWS) and IKAR for

GIRL RISING

Girl Rising, a film by Academy-Award-nominated director Richard E. Robbins, spotlights remarkable stories of girls around the world overcoming nearly insurmountable odds to achieve their dreams.

Tuesday, February 4, 2014

6:30 p.m. Doors Open

7:00 p.m. Film screening and discussion

8:30 p.m. Refreshments and Teen Breakout Session

Ann and Jerry Moss Theater at New Roads School
3131 Olympic Blvd., Santa Monica

Dynamic Panel Discussion

Moderated by Michaela Watkins,
Actor and Women's Rights Activist



With:

Alex Dionne, *Girl Rising Producer*

Devashri Mukherjee, *AJWS India Consultant*

Varun Soni, *Dean of Religious Life, USC*

GET TICKETS

General \$18 • Students \$5

Seating is first-come, first-served.

Proceeds from this event will benefit our work with women and girls worldwide.



ONE GIRL WITH COURAGE IS A REVOLUTION



This event is proudly supported by these community partners:*

Beth Chayim Chadishim
Jewish World Watch
Kehillat Israel
Kol Ami
Leo Baeck Temple
Los Angeles Jewish Film Festival
Moving Traditions
Shtibl Minyan
Temple Emanuel of Beverly Hills
Temple Isaiah
Temple Israel of Hollywood
Temple Judea
University Synagogue
USC Office of Religious Life

* list in formation



For our first event this year, the **Women of Kol Ami** are proud to host a fabulous evening on Friday, February 14th!

We will be starting with a Satellite Shabbat service and dinner, led by Cantor Saltzman, at a restaurant in Pasadena.

After dinner we will be heading over to Boston Court Theatre for a concert by the fabulous Cris Williamson (<http://www.bostoncourt.com/events/196/cris-williamson>)



Also don't forget to check into Kol Ami on Foursquare the next time you're at Temple! Check out our loyalty special!

[Click Here](#)

Volunteers needed for Game night at Triangle Square



Congregation Kol Ami, MCC, and the Gay Men's Chorus are co-sponsors of a volunteer opportunity with our LGBT Senior friends at GLEH's Triangle Square. Join us to play games, socialize, and have fun with different generations in the community.

We will meet the last Thursday of each month from 7PM - 9PM. Please arrive at Triangle Square by 6:45PM.

Students in need of community service hours are encouraged to join in. Kol Ami will sign off on this activity as hours served.

Come volunteer, brighten someone's day, and have a great time too!

Your next opportunity to participate is Thursday, January 30, 2014 at 7:00 PM.

For more information, please contact Kol Ami member Howard Goldin at: hjg1217@aol.com or Bill Gallimore, GMCLA Gives Back at: billgallimore@aol.com

Hope to see you there!

Tickets for the concert will be \$25.00 each and will be limited, so please let us know as soon as you can if you are interested and how many tickets you may want.

This event is open to everyone

RSPV to

womenofkolami@gmail.com

We will be sending out more details very soon.

Looking forward to seeing you on the 14th!



PARENT-INFANT GUIDANCE CLASS

Congregation Kol Ami has a vital resource for our community family members

Parenthood is the most challenging job that exists, and allowing a very young child autonomy and a growing sense of a separate self is one of the most complicated tasks for parents. Parents build on their own knowledge and develop their vital role. Resources for Infant Educators (RIE) can support you as you and your child grow and learn. Can that be made easier? Yes, it can!

What does it mean to allow a child to become?

Can a parent look within the child for answers to the child's being?

How will you become the parent you imagine you want to be?

Its Time to Bring in Your Tzedakah Cans!



Please bring in your cans for donation, and don't forget to pick up a new one while you're here.

During the weekly RIE Certified Parent-Infant Guidance® classes for families with children from birth to age two, in a small group of parents and babies or toddlers of similar age and stage, you may:

- * *Learn to see babies in ways that empower you and your child;*
- * *Come to understand them as competent human beings;*
- * *Help support the growth of your baby's natural abilities from birth.*

"I'm finding out much more about myself and my potential to grow through my introduction to Magda Gerber's RIE Approach." "RIE has given me so many ways to help both myself and my child feel our respective feelings." Mother of two year-old son

Infant - toddler specialist Elizabeth Memel, M.A., RIE Associate, has been instructing adult education programs for infant caregivers since 1985. Parents are invited to observe a class at no charge. Please go to www.authenticbabies.com or call 323-651-0022 for more information.

[Forward email](#)



Try it FREE today.

This email was sent to execdir@kol-ami.org by staff@kol-ami.org | [Update Profile/Email Address](#) | Instant removal with [SafeUnsubscribe™](#) | [Privacy Policy](#).

Congregation Kol Ami | 1200 North La Brea Avenue | West Hollywood | 323.606.0996 | www.kol-ami.org | CA | 90038